

PRODUCT CATALOGUE



www.star-ind.com



STAR TECHNOLOGIES

THE BIG PICTURE

Star Technologies is a leading manufacturer of an extensive assortment of adhesives, coatings, sealants, waterproofing materials and other construction chemicals with latest technologies serving construction, industrial and retail markets.

Star Technologies was established in 2000 and currently has production facilities in United Arab Emirates, Saudi Arabia, India to manufacture water based, solvent based and polyurethane adhesives, HVAC coatings, sealants, epoxy and cementitious construction chemicals. Star Technologies specialty products are determined to provide permanent solutions in bonding, sealing and protection.

Decades of global market experience allows Star Technologies to identify the needs and requirements of each region and provide the best solutions for them.

Our Mission

Our mission is to fulfill the needs of our customers by providing our technical support and commit to quality.

Our products and services are supplied to all the Middle East, Asia, Africa, CIS and India serving many customers in different market segments.

Star Technologies is a part of Abdulaziz Al Sorayai Investment Company, Saudi Arabia. As part of our diversification program, Star Technologies always focuses on hiring qualified experts from different fields and different countries, turning our company to a multi-national organization which creates a warm and friendly atmosphere within the company.



**INDUSTRIAL AND
CONSTRUCTION CHEMICALS**

CONNECT WITH US
www.star-ksa.com

**OUR
CREDO**
OUR QUALITY



STAR
TECHNOLOGIES



RESEARCH & DEVELOPMENT

STAR TECHNOLOGIES

Star Technologies innovation and development center combines together the best minds in the industry to generate new ideas in providing the best solutions to our customers.

Our R&D experts are capable to carry out all the needs and requirements - from idea initiation to development stage, testing, fine tuning the products, product application test and manufacturing commercially competitive and well-performing products.

Our research mission is straightforward - to provide the best permanent solutions in industrial and construction chemical segments at affordable prices, without compromising our value and quality.

Star Specialties Polymers Pvt. Ltd. & Star Adhesive & Resin Ind. Factory, UAE are both part of **Abdulaziz Al-Sorayai Investment Company (ASIC)**, a flagship company involved in controlling and consolidation of diverse manufacturing and trading business.

Abdulaziz Al-Sorayai Investment Company (ASIC) is owned by **Sheikh Abdulaziz Nasser Alsorayai, Chairman of Alsorayai Group**, a company respected in the field of carpets and rugs. He is also a Managing Director of Al Sorayai United Group of Factories, composed of 4 lines of business including Furniture, Polymers & Detergents; Pipes & Bags of Papers; Polyethylene Foam and Curtain Accessories.

The businesses include:

- ❖ Distributing of Air Conditioning Units (Kleenair & Wolf brand)
- ❖ Fabrication of aluminum grilles and diffusers for air distributions
- ❖ Perfumery and beauty products.
- ❖ Chemicals and Adhesives, and
- ❖ Textile Compa

Abdul Aziz Alsorayai Investment Company
ASIC GROUP



ABOUT US

Star Technologies introduces that **Star Specialties Polymers Pvt. Ltd.**, was established in 2003 *in India* with an aim to manufacture & export of certain raw materials like Homo polymers/Emulsions for use in Water and Solvent based adhesives, Waterproofing coatings and other construction chemicals. The company recently ventured into manufacturing of construction chemicals.

Star Technologies has wide spectrum of technically advanced construction chemical products range for many years now one of the well known brands in Middle East among the construction, wood and HVAC Industries. Some of the popular product categories are STARBOND/STARFIX/STARPROOF/STARFLOOR / STARGROUT/STARKLEEN.

Star Technologies has well established and equipped R&D & Quality Control Laboratory to ensure product quality consistency & for continuous improvement to our product features.

We are an **ISO 9001-2015** accredited company and are committed to deliver value to our customers.

Ecology and safety

SSPL accords highest priority to safety, health and environment management. At SSPL we ensure to protect environment by adhering to qualitative processing systems and care for human safety. Sustainable development is an integral part of company's value system.

PRODUCT CATEGORIES

STARproof®

STARBOND®

STARFIX®

STARFLOOR®

STARGROUT™

STARKLEEN®

**WATERPROOF COATINGS &
CONSTRUCTION CHEMICALS
CONNECT WITH US**

INDEX



SINGLE COMPONENT WATER PROOFING COATING	PAGES
STARPROOF WF MB 602	1
STARPROOF WF SP 600	2
STARPROOF WF AC 601 ULTRA	3
STARPROOF WF AC 601 FB	4
STARPROOF WF SPU+	5
STARPROOF WF WALLCOAT	6
STARPROOF WF WALLCOAT CLASSIC	7
STARPROOF HR 900	8
STARPROOF CRYSTAL COAT 1K	9
POLYMER WATERPROOFING & BONDING AGENT	
STARBOND STARCRETE ACR 30 ECO	10
STARBOND STARCRETE ACR 30	11
STARBOND STARCRETE	12
STARBOND STARCRETE PRIME+	13
STARBOND SBR 30	14
STARBOND SBR SUPER	15
STARBOND SUPERLATEX 50	16
STARPROOF SUPER PRIME	17
STARBOND STARCEM 2K ECO	18
STARBOND STARCEM 2K	19
STARBOND STARLAC	20
ADMIXTURES AND PLASTICIZERS	
STARBOND AM LG 20	21
STARBOND STARPLEX	22
STARBOND PLASTO A	23
STARBOND ACC 3	24
GROUTS	
STARGROUT PAG	25
STARGROUT INJEX	26
STARGROUT JF 001	27
STARGROUT EG 003	28
STARGROUT GP 045	29
BUILDING AND JOINT SEALANTS	
STARFIX ACF 609	30
STARFIX PU 600	31
STARFIX PS GG 100	32
STARFIX PS PG 100	33
STARFIX PS RG 100	34
REPAIR AND RESTORATION	
STARPROOF SALTFIX	35
STARGROUT PLUG	36
FLOORING	
STARFLOOR EP MP	37
STARFLOOR STARPRIME 300	38
STARFLOOR EPC HD	39
STARFLOOR SF 034	40
STARPROOF CTE	41
HVAC COATING	
STARFIX 30-36	42
CLEANING CHEMICALS	
STARKLEEN TILOKLEEN	43



DAMAN



HYDERABAD



R&D LABORATORY





STARproof® WF MB 602

PRODUCT DESCRIPTION

STARPROOF WF MB 602 is a Liquid bituminous elastomeric waterproofing membrane, specially designed from a blend of special resin and rubber, reinforced with special water-repelling fillers, minerals stabilizers, and gelling agent. It is a tough yet extremely flexible coating that can be efficiently applied to any thickness by roller or squeegee creating a fully adhered waterproofing coating with no wastage. It is water based with low VOC's that is sustainable for years as a waterproofing coating.

BENEFITS

- A highly elastic product, and cures to a rubber like membrane capable of withstanding severe cases of expansion, contraction, and deck movements.
- More durable than normal asphalt coating and lasts longer than most other coatings.
- Superior wetting and adhesion properties ensure durable bond and resistance to peeling, chipping, and/or separation and longer life.
- Has the unique property of adapting itself over the irregular contours of the deck and forming a waterproof and impervious blanket.
- Single component, cold applied requiring no mixing or heating; saves labor costs.
- It has good Anti-Root property, must be used with proper reinforcement.

USES

Ideal waterproofing system for concrete roofs, polyurethane foam slabs, polyester built up roofs, maintenance of existing roofs, masonry and concrete walls, bathrooms, basements, bridges, decks, Podium Areas, metal surfaces etc. Used as a sandwich membrane in new construction and as a surface treatment on existing slabs. Uses as a seamless, impervious coating on roofs and concrete structures. Protective coating in infrastructure projects in civil engineering on non-trafficked areas. It has excellent adhesion to concrete, brickwork, asphalt, corrugated asbestos, and asbestos cement.

COVERAGE

13-15 sq. ft/kg in 2 coat application with 450-500 µm Dry film thickness.

STORAGE & SHELF LIFE

Shelf life is 12 months in unopened container. Store away from sunlight and preferably below 30°C. Storage should be frost protected.

PACKING

STARPROOF WF MB 602 is available in 1, 5, 10, 20 kg. pail and 50 kg barrel.





STARproof® WF SP 600

PRODUCT DESCRIPTION

STARPROOF WF SP 600 is a special synthetic resin based waterproof coating, because of its excellent flexibility and thixotropic nature, it is ideal for use on horizontal surfaces.

BENEFITS

- Very economical and pollution free waterproof coating.
- Due to its white color, it offers excellent UV Resistance & Solar reflectivity.
- Gives cooling effect due to the reflective properties.

USES

- Waterproofing for roofs ranging from asphalt, asbestos, cement to concrete, Metal Surfaces, and terrazzo tiles.
- Recommended for both horizontal and inclined structures.
- Waterproofing of roof slabs, terraces, balconies, sun shades, parapet walls, etc. Provides additional waterproofing and protection when used as a base or intermediate coat in brickbat Coba / IPS flooring.
- Waterproofing of new as well as old surfaces
- It is good adhesion for all types of Polymers and Bituminous Coating.

COVERAGE

13-15 sq. ft / kg in 2 coat application with 450-500 µm Dry film thickness.

STORAGE & SHELF LIFE

Shelf life is 12 months in unopened container. Store away from sunlight and preferably below 30°C. Storage should be frost protected.

PACKING

STARPROOF WF SP 600 is available in 1, 5, 10, 20 kg. pail and 50 kg barrel.





STARproof® WF AC 601 ULTRA

PRODUCT DESCRIPTION

STARPROOF WF AC 601 ULTRA is a special acrylic resin based waterproof coating. It has excellent flexibility and thixotropic nature, is ideal for use on vertical as well as horizontal surfaces. It is single pack, very economical and pollution free waterproof coating. Due to its white color, it has excellent solar insulation capacity. It does not contain Lead or Mercuric compound.

BENEFITS

- Life and durability of the structure is increased.
- Easy application, no machinery required.
- Light weight compared to conventional roofing systems, thereby loading on the roofs is reduced.
- Provides seamless and joint free seal throughout the surface, which is impervious to water.
- Lower labor cost due to easy, simple and quick application, leading to quick completion and time saving.
- Provides insulation due to solar reflection.
- Excellent bonding to most building materials.

USES

- Water proofing of plaza, car park deck.
- Water proofing cum decorating of external plastered walls.
- Water proofing of new surfaces as well as for the repairs of old surface, whether previously treated or not.
- Suitable for horizontal as well as vertical surfaces like flashings.
- Water proofing of roof slabs, terraces, balconies, sunshades, parapet walls, etc.
- Water proofing of flashing, roof edgings, gully, steeply pitched designs, etc.
- WF-AC-601 provides additional water proofing and protection when used as base and/or intermediate coat in brick bat coba and/or IPS floorings.
- STARPROOF WF AC 601 ULTRA is optimally suitable for application on structures having complicated geometry like domes, arches, shells, folded plates, paraboloids, corrugated sheets, etc.
- For garden, swimming pools, basement, sandwich application is recommended. For details, refer our technical department.

COVERAGE

1.6-1.8 kg/sq m in 2 coat application with 950-1000 µm Dry film thickness.

STORAGE & SHELF LIFE

Shelf life is 12 months in unopened container. Store away from sunlight and preferably below 30°C. Storage should be frost protected.

PACKING

STARPROOF WF AC 601 Ultra is available in 1, 5, 10, 20 kg. pail and 50 kg barrel..



STARproof® WF AC 601 FB

PRODUCT DESCRIPTION

STARPROOF WF AC 601 FB is a special acrylic resin based fiber reinforced terrace waterproof coating system. It has excellent flexibility and thixotropic nature, with antifungal and crack bridging ability, is ideal for use on vertical as well as horizontal surfaces. It is single pack, very economical and pollution free waterproof coating. Due to its white Color, it has excellent solar insulation capacity. It does not contain Lead or Mercuric compound.

It forms higher film thickness, has excellent flexibility, breathing properties, water resistance, crack-bridging ability, weathering durability and an excellent resistance to the growth of microorganisms.

BENEFITS

- Life and durability of the structure is increased.
- Easy application, no machinery required.
- Light weight compared to conventional roofing systems, thereby loading on the roofs is reduced.
- Provides seamless and joint free seal throughout the surface, which is impervious to water.
- Lower labor cost due to easy, simple and quick application, leading to quick completion and time saving.
- Provides insulation due to solar reflection.
- Excellent bonding to most building materials.
- Low water absorption
- Low dirt picks up
- Long term exterior durability
- UV stable
- Microbial resistance – Resistance to fungus and algae hence maintains the aesthetic value.
- Fiber reinforcement provides improved tensile strength.

USES

- Water proofing of plaza, car park deck.
- Water proofing cum decorating of external plastered walls.
- Water proofing of new surfaces as well as for the repairs of old surface, whether previously treated or not.
- Suitable for horizontal as well as vertical surfaces like flashings.
- Water proofing of roof slabs, terraces, balconies, sunshades, parapet walls, etc.
- Water proofing of flashing, roof edgings, gully, steeply pitched designs, etc.
- STARPROOF WF AC 601 FB provides additional water proofing and protection when used as base and/or intermediate coat in brick bat coba and/or IPS floorings.
- STARPROOF WF AC 601 FB is optimally suitable for application on structures having complicated geometry like domes, arches, shells, folded plates, paraboloids, corrugated sheets, etc.
- For garden, swimming pools, basement, sandwich application is recommended. For details, refer our technical department.
- All types of exterior masonry surfaces, concrete, cement sand renderings, etc.
- Applicable on asbestos sheets.

COVERAGE

1 kg/sq m in 2 coat application with 500-600 µm Dry film thickness.

STORAGE & SHELF LIFE

Shelf life is 12 months in unopened container. Store away from sunlight and preferably below 30°C. Storage should be frost protected.

PACKING

STARPROOF WF AC 601 FB is available in 1, 5, 10, 20 kg. pail and 50 kg barrel..





STARproof® WF SPU+

PRODUCT DESCRIPTION

Starproof WF SPU+ is a high performance, polyurethane hybrid UV stable, ecofriendly, flexible, water-based single component liquid waterproofing membrane. It is based on an advanced polyurethane modified water-based polymer which is a proven solution for weatherproofing & waterproofing applications for use in roof, terraces, Podium area's and etc.

BENEFITS

- Excellent Resistant to alkaline with and inherent properties of anti fungal growth.
- Flexible Class 3 membrane (400% + Elongation)
- Eco-Friendly low odor for easy use without irritation
- Fast drying can be recoated after 3-5 hours at normal room temperature
- UV stable non yellowing, can be used externally
- Compatible works well with many cement-based tiles adhesives
- Generally, does not require reinforcing for it to be effective
- Monolithic / seamless in-situ Membrane
- Excellent adhesion to concrete.
- Excellent elongation and very good low temperature flexibility.
- WF SPU + cures to a permanently flexible seamless membrane that has good adhesion to a wide range of substrates. Unlike more traditional bitumen-based products.
- WF SPU + does not readily brittles with age, exposure to ultra violet radiation or weathering, and hence it does not crack or craze due to its flexible properties.

USES

- Suitable for use on many porous substrates including Gyprock, fiber cement, concrete, render brickwork, render and plasterboard.
- WF SPU + can be used to help water/damp proof balconies and decks, shower recesses, repair and restoration of leaking roofs as well as a damp proof membrane in sandwich panel construction.
- It is also suitable for deck areas & can be used in planter boxes and retaining walls as long as it is protected by drainage or corflute.

STORAGE & SHELF LIFE

Shelf life is 12 months in unopened container. Store away from sunlight and preferably below 30°C. Storage should be frost protected.

COVERAGE

30-35 sq. ft/kg in 2 coats.with 150-200 µm achieved in 2-coats

PACKING

STARPROOF WF SPU+ is available in 1, 5, 10, 20 kg. pail and 50 kg barrel..



STARproof® WF WALLCOAT

PRODUCT DESCRIPTION

STARPROOF WF WALL COAT is a special acrylic polymer based decorative & waterproof coating. It has excellent flexibility and thixotropic nature, is ideal for use on vertical as well as horizontal surfaces. It is extensively used for exterior applications. Due to its white color, it has excellent solar reflectance capacity. It does not contain lead or mercuric compound.

BENEFITS

- Life and durability of the structure is increased.
- Easy application, no machinery required.
- Light weight compared to conventional roofing systems, thereby loading on the roofs is reduced.
- Provides seamless and joint free seal throughout the surface, which is impervious to water.
- Lower labor cost due to easy, simple, and quick application, leading to quick completion and time saving.
- Provides insulation due to solar reflection.
- Excellent bonding to most building materials.

USES

- It is suitable for interior and exterior decorative coating.
- Excellent weather resistance protects surface against the extremes.
- Suitable for horizontal as well as vertical surfaces.
- Application of New as well as old surfaces.
- Non-yellowing and fade resistant.
- Water proofing of flashing, roof edgings, gully, steeply pitched designs, etc.
- Excellent Adhesion to a wide variety of substrates.
- STARPROOF WF WALL COAT is optimally suitable for application on structures having complicated geometry like domes, arches, shells, folded plates, paraboloids, corrugated sheets, etc.
- 100% Acrylic emulsion forms a breathable film that resists blistering and peeling caused by moisture.

Coverage

30-35 sq. ft/kg with 150-200 µm dry film achieved in 2-coat

STORAGE & SHELF LIFE

Shelf life is 12 months in unopened container. Store away from sunlight and preferably below 30°C. Storage should be frost protected.

PACKING

STARPROOF WF WALL COAT is available in 1, 5, 10, 20 kg. pail, 50,200 kg.





STARproof® WF WALLCOAT CLASSIC

PRODUCT DESCRIPTION

STARPROOF WF WALL COAT CLASSIC is a special acrylic polymer based decorative & waterproof coating. It has excellent flexibility and thixotropic nature, is ideal for use on vertical exterior surfaces. Due to its white color, it has excellent solar reflectance capacity. It does not contain lead or mercuric compound.

BENEFITS

- Life and durability of the structure is increased.
- Easy application, no machinery required.
- Provides seamless and joint free seal throughout the surface, which is impervious to water.
- Lower labor cost due to easy, simple, and quick application, leading to quick completion and time saving.
- Provides insulation due to solar reflection.
- Excellent bonding to most building materials.

USES

- It is suitable for interior and exterior decorative coating.
- Excellent weather resistance protects surface against the extremes.
- Suitable for horizontal as well as vertical surfaces.
- Application of New as well as old surfaces.
- Non-yellowing and fade resistant.
- Water proofing of flashing, roof edgings, gulley, steeply pitched designs, etc.
- Excellent Adhesion to a wide variety of substrates.
- STARPROOF WF WALL COAT CLASSIC is optimally suitable for application on structures having complicated geometry like domes, arches, shells, folded plates, paraboloids, corrugated sheets, etc.
- 100% Acrylic emulsion forms a breathable film that resists blistering and peeling caused by moisture.

COVERAGE

30-35 sq. ft/kg in 2 coats.with 120-150 µm achieved in 2-coats.

STORAGE & SHELF LIFE

Shelf life is 12 months in unopened container. Store away from sunlight and preferably below 30°C. Storage should be frost protected.

PACKING

STARPROOF WF WALLCOAT CLASSIC is available in 1, 5, 10, 20 kg. pail and 50 kg barrel..





STARproof® HR 900

PRODUCT DESCRIPTION

STARPROOF HR 900 is a single component coating having high solar reflectance which keeps roofs cooler in high hot weather conditions & also acts as a protective coating as well as provides protection from thermal shocks. It's tough and seamless membrane resists many harsh chemicals and bridges hairline cracks. It has good UV protection & display excellent dirt pick-up resistance and retain their flexibility long after aging.

BENEFITS

- Reduce the energy required for interior cooling.
- Reduce thermal stresses on the roof, hence improving system lifetimes.
- Improve indoor thermal comfort;
- Reduce running and maintenance costs
- Increase the value of a building.
- High Heat insulation and reduces thermal conductance.
- Protects exposed concrete structures against carbonation and ingress of atmospheric gases and salts.
- Excellent UV resistance and Dirt pick-up and resistance to blistering.
- Non-toxic, washable and environment friendly.
- Low VOC

USES

- Sloped concrete roofs, metal profile roofs & asbestos roofs, top coats as Combo Roof, PU foams.
- Roofs, terraces, balconies, domes
- Sandwich panels, corrugated sheets
- Over coating on minerals surfaced waterproofing membranes.
- Concrete facades.

COVERAGE

30-35 sq. ft/kg in 2 coats.with 150-200 µm achieved in 2-coats.

STORAGE & SHELF LIFE

Shelf life is 12 months in unopened container. Store away from sunlight and preferably below 30°C. Storage should be frost protected.

PACKING

STARPROOF HR 900 is available in 1, 5, 10, 20 kg. pail and 50 kg barrel..





STARproof® CRYSTAL COAT 1K

PRODUCT DESCRIPTION

STARPROOF CRYSTALCOAT 1K is a SSPL's unique chemical treatment designed to waterproof and protect concrete from water penetration through pores and capillaries. As the most chemically active of the SSPL Waterproofing Product Line, this product was specifically designed to be a surface applied treatment that penetrates into fresh or existing concrete to provide a permanent in-depth water proofing solution. Its state-of-the-art crystalline technology that works within the substrate to force a reaction between cement particles and enhancing concrete's natural abilities. The reaction that occurs causes millions of long pin-like crystals to form within the pores and capillaries of the concrete effectively stopping water penetration through enhanced hydration. Due to the catalytic nature of SSPL technology, the ability to generate this reaction is continuously present. Should water or moisture become present at a future date, the process will reactivate stopping all future penetrations.

BENEFITS

- Will autogenously repair concrete
- Will reactivate the waterproofing mechanism should water be present in the future.
- Will increase durability of the concrete
- Permeability Reducing Admixture
- Will protect against cracking and spalling
- Will stop water penetration into the concrete
- Integral waterproofing system.
- eliminate the need for any other waterproofing system

USES

- Swimming Pools
- Tunnels and subway systems bags/pails.
- Parking Garages, Rooftops and Dry vaults
- All below grade concrete foundations like basements, elevator pits, underground water tanks, water reservoirs, etc
- Sewage and water treatment plants
- Water towers and water reservoirs
- Marine Structures, Pipes, Bridge Decks etc

STORAGE & SHELF LIFE

The pails and drums must be stored in a covered area, away from direct sunlight, UV and other sources of heat. The shelf life of the product is up to 12 months if stored as per recommendations. Excessive exposure to sunlight and UV will result in the deterioration of the quality of the product and reduce its shelf life.

PACKING

STARPROOF CRYSTALCOAT 1K is available in 25 Kg bag.





STARBOND® STARCRETE ACR 30 ECO

PRODUCT DESCRIPTION

STARBOND STARCRETE ACR 30 ECO is an aqueous dispersion of Acrylic Co-Polymer, specifically designed for modified Portland cement compositions. It can be used as Waterproofing on concrete and masonry surfaces. Mortar modified with STARCRETE ACR 30 ECO has improved physical strength, and superior adhesion to old concrete, masonry, brick, and many other surfaces. The dispersion contains an anionic emulsifier system and is free from film forming aids, solvents, and plasticizers.

BENEFITS

- Easy to use.
- Improves bond Strength.
- Increases durability under freeze/thaw cycling.
- UV Resistant
- Reduce cracking through increased mortar flexural strength.
- Increases mortar wear resistance under rubber-wheeled traffic.
- Repair mortar offers greater impact resistance.
- Due to low permeability, it can be used for waterproof sealing and lining of tanks, etc.

USES

- Toppings, patches, and leveling course.
- Waterproofing of building terrace, toilet sunken portion, basements, Water tanks, Swimming pools.
- Thin Sets, terrazzo, stucco, and bonding slurries.
- Repairs utilizing spray or fill coats.
- Heavy duty floors & high strength of concrete bonding.
- Repairs to pre-cast structural members.
- Architectural panels, bridge decks & high-way repairs.
- Resistance to mild chemicals, grease, alkaline, and acid.

METHOD OF APPLICATION

- Prime the prepared surface with STARBOND STARCRETE ACR 30 ECO admixed with 3 litres of water by brush, squeeze, roller & spray.
- Apply first coat with mixture of STARBOND STARCRETE ACR 30 ECO : Cement in ratio of 1: 2 by weight.
- Apply top coat with the same mixture ratio as above.
- For best results cover with protective layer.

COVERAGE

2 sq.m per kg depending on the substrates

SHELF LIFE & STORAGE

Shelf life is 12 months in unopened container. Store in a cool, dry place away from sunlight at temperatures below 30°C.

PACKING

STARBOND STARCRETE ACR 30 ECO is available in 1, 5, 10, 20 kg. pail and 50 kg barrel.





STARBOND® STARCRETE ACR 30

PRODUCT DESCRIPTION

STARBOND STARCRETE ACR 30 is an aqueous dispersion of Acrylic Co-Polymer, specifically designed for modified Portland cement compositions. Mortar modified with **ACR 30** has improved physical strength, and superior adhesion to old concrete, masonry, brick, and many other surfaces. The dispersion contains an anionic emulsifier system and is free from film forming aids, solvents and plasticizers.

BENIFITS

- Easy to use.
- Improves bond Strength.
- Increases durability under freeze/thaw cycling.
- Reduce cracking through increased mortar flexural strength.
- Increases mortar wear resistance under rubber wheeled traffic.
- Repair mortar offers greater impact resistance.
- Due to low permeability, it can be used for waterproof sealing and lining of tanks etc.

USES

- Toppings, patches and leveling course.
 - Thin Sets, terrazzo, stucco and bonding slurries.
 - Repairs utilizing spray or fill coats.
 - Heavy duty floors & high strength of concrete bonding.
 - Repairs to pre-cast structural members.
 - Architectural panels, bridge decks & high-way repairs.
- Resistance to mild chemicals, grease, alkaline and acid

METHOD OF APPLICATION

- Prime the prepared surface with STARBOND STARCRETE ACR 30 admixed with 3 litres of water by brush, squeeze, roller & spray.
- Apply first coat with mixture of STARBOND STARCRETE ACR 30 : Cement in ratio of 1: 2 by weight.
- Apply top coat with the same mixture ratio as above.
- For best results cover with protective layer.

COVERAGE

2 sq.m per kg depending on the substrates

SHELF LIFE & STORAGE

Shelf life is 12 months in unopened container. Store in a cool, dry place away from sunlight at temperatures below 30°C.

PACKING

STARBOND STARCRETE ACR 30 is available in 1, 5, 10, 20 kg. pail and 50 kg barrel.



STARBOND® STARCRETE

PRODUCT DESCRIPTION

STARBOND STARCRETE is a white liquid Acrylic Polymer blended with plasticizers and selected fillers. It can be used for waterproof coating, bonding agents, when diluted it produces a gauging solution for improving cementations mixes. When it is used with combinations with standard quality of ordinary Portland cement, it improves the mechanical properties such as bonding (adhesion) with various building materials, flexural, compression, and impact strength. It improves the thin section fragility of cement when used as a coating.

BENEFITS

- STARCRETE is easily mixed with cement, cures to hard, tough, weather-resistant surfaces & bonds strongly to most of the building materials.
- STARCRETE can be over coated by exterior emulsion base coating or cement-based paints.
- It can be applied to uniform thickness coating on both the horizontal and vertical surfaces.
- STARCRETE allows trapped water vapor to inhibit and prevents blistering and adhesion failure.
- It makes cement mortars or coating compact thus preventing salt penetration into the concrete.
- It is unaffected by UV light and prevents discoloration of concrete and corrosion in steel due to its alkali nature.
- It is resistant to water, dilute acids, and alkali solutions. The coating is highly durable even in continuous contact with water.
- It is non-flammable, non-hazardous, does not evolve toxic gases when exposed to fire. Non-toxic to a human being. Most properties improve on aging. Resistant to fungus and microorganism growth.

USES

- Waterproofing of building terrace, toilet sunken portion, basements, waterproofing of water tanks, and swimming pools.
 - Bridge decks, traffic aprons, runway, parking garages, industrial or factory floors, balconies, mechanical rooms, sidewalls. Etc.
 - Pools and foundations, reservoirs, channels dams, water tower, tunnels, etc. Sewers, silos, foundation walls, swimming pools, etc.
 - Repairing of concrete & masonry walls - internal, external, and terrace roofs by cement mortars.
 - Protection of concrete against corrosion and effloresce.
- As a bonding agent for old concrete and new concrete.

METHOD OF APPLICATION

- Prime the prepared surface with STARBOND STARCRETE admixed with 3 litres of water by brush, squeeze, roller & spray.
- Apply first coat with mixture of STARBOND STARCRETE : WATER :Cement in ratio of 1: 1: 3 by weight.
- Apply top coat with the same mixture ratio as above.
- For best results cover with protective layer.

COVERAGE

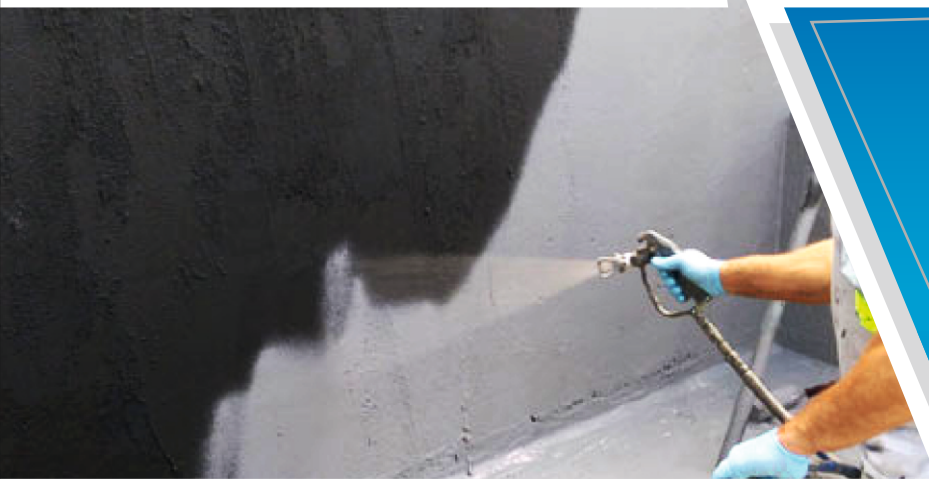
2-3 sq.m per kg depending on the substrates

SHELF LIFE & STORAGE

Shelf life is 12 months in unopened container. Store in a cool, dry place away from sunlight at temperatures below 30°C.

PACKING

STARBOND STARCRETE is available in 1, 5, 10, 20 kg. pail and 50 kg barrel.





STARBOND® STARCRETE PRIME+

PRODUCT DESCRIPTION

STARBOND STARCRETE PRIME+ is an aqueous dispersion of Acrylic Co-Polymer, specifically designed for modified Portland cement compositions. Mortar modified with STARCRETE PRIME + has improved physical strength, and superior adhesion to old concrete, masonry, brick, and many other surfaces. The dispersion contains an anionic emulsifier system and is free from film forming aids, solvents and plasticizers.

BENIFITS

- Improves bond Strength.
- Increases durability under freeze/thaw cycling.
- Reduce cracking through increased mortar flexural strength.
- Increases mortar wear resistance under rubber wheeled traffic.
- Repair mortar offers greater impact resistance.
- Due to low permeability, it can be used for waterproof sealing and lining of tanks etc.
- Its food grade material-Specially designed for water tanks

USES

- Toppings, patches and leveling course.
- Thin Sets, terrazzo, stucco and bonding slurries.
- Repairs utilizing spray or fill coats.
- Heavy duty floors & high strength of concrete bonding.
- Repairs to pre-cast structural members.
- Architectural panels, bridge decks & high-way repairs.
- Resistance to mild chemicals, grease, alkaline and acid.

METHOD OF APPLICATION

- Prime the prepared surface with STARBOND STARCRETE PRIME+ admixed with 3 litres of water by brush, squeeze, roller & spray.
- Apply first coat with mixture of STARBOND STARCRETE PRIME+ : Water: Cement in ratio of 1: 2 : 5 by weight.
- Apply top coat with the same mixture ratio as above.
- For best results cover with protective layer.

COVERAGE

4-5 sq.m per Kg depending on the substrates

SHELF LIFE & STORAGE

Shelf life is 12 months in unopened container. Store in a cool, dry place away from sunlight at temperatures below 30°C.

PACKING

STARBOND STARCRETE PRIME + is available in 1, 5, 10, 20 kg. pail and 50 kg barrel.





STARBOND[®] SBR 30

PRODUCT DESCRIPTION

STARBOND SBR 30 is an SBR latex based waterproofing bonding agent designed as an integral adhesive for slurry bond coats, mortars and concrete to improve bond strength and chemical resistance. It is ideal for producing high abrasion resistant floors, for use in internal and external renderings, flooring screeds and patch repairs. When dry the finished mortars or concrete show a vastly improved resistance to water. It can be used where improvements in physical properties of Portland cement systems are required.

BENEFITS

- Improves bond Strengths and to hardened concrete
- Increases durability under freeze/thaw cycling.
- Resistant to deicing salts.
- Reduce cracking through increased mortar flexural strength.
- Increases mortar wear resistance under rubber wheeled traffic.
- Increases mortar tensile strength.

USES

- Toppings, patches and leveling course.
- Thin Sets, terrazzo, stucco and bonding slurries.
- General reconstruction work and latex modified overlays.
- Bridge decks, highway and parking decks.

Application As a bonding agent :

Use 1 kg material for 50 kg bag of cement

Application As a Waterproof Coating :

Ratio - Polymer : Water : Cement = 1 : 1: 3 and Coverage 30 Sq ft/ 1 kg ,depending on the substrate

STORAGE & SHELF LIFE

Shelf life is 12 months in unopened container. Store in a cool , dry place away from sunlight

PACKING

STARBOND SBR 30 is available in 1, 5, 10, 20 kg. pail and 50 kg barrel.





STARBOND[®] SBR SUPER

PRODUCT DESCRIPTION

STARBOND SBR SUPER is an SBR latex based waterproofing bonding agent designed as an integral adhesive for slurry bond coats, mortars and concrete to improve bond strength and chemical resistance. It is ideal for producing high abrasion resistant floors, for use in internal and external renderings, flooring screeds and patch repairs. When dry the finished mortars or concrete show a vastly improved resistance to water. It can be used where improvements in physical properties of Portland cement systems are required.

BENEFITS

- Improves bond Strengths and to hardened concrete
- Increases durability under freeze/thaw cycling.
- Resistant to deicing salts.
- Reduce cracking through increased mortar flexural strength.
- Increases mortar wear resistance under rubber wheeled traffic.
- Increases mortar tensile strength.

USES

- Toppings, patches and leveling course.
- Thin Sets, terrazzo, stucco and bonding slurries.
- General reconstruction work and latex modified overlays.
- Bridge decks, highway and parking decks.

Application As a bonding agent :

Use 1 kg material for 50 kg bag of cement

Application As a waterproof coating :

Ratio - Polymer : Water : Cement = 1 : 2: 5 and Coverage 40 Sq ft/ 1 kg ,depending on the substrate

STORAGE & SHELF LIFE

Shelf life is 12 months in unopened container. Store in a cool , dry place away from sunlight

PACKING

STARBOND SBR SUPER is available in 1, 5, 10, 20 kg. pail and 50 kg barrel.





STARBOND[®] SUPERLATEX 50

PRODUCT DESCRIPTION

STARBOND SUPERLATEX 50 is an SBR latex-based bonding agent designed as an integral adhesive for slurry bond coats, Renders, and Bonding Mortars and concrete to improve bond strength and chemical resistance. It is ideal for producing high abrasion resistant floors, for use in internal renderings, flooring screeds, and patch repairs. When dry the finished mortars or concrete shows vastly improved resistance to water. It can be used where improvements in the physical properties of Portland cement systems are required.

BENEFITS

- Improves bond Strengths and to hardened concrete
- Increases durability under freeze/thaw cycling.
- Resistant to deicing salts.
- Reduce cracking through increased mortar flexural strength.
- Increases mortar wear resistance under rubber wheeled traffic.
- Increases mortar tensile strength.
- Multi-Purpose and Economical Product

USES

- Bonding agent for old to new concrete.
- Toppings, patches and leveling course,
- Thin Sets, terrazzo, stucco, and bonding slurries.
- General reconstruction work and latex modified overlays.
- parking decks.

Application As a bonding agent :

Use 1 kg material for 50 kg bag of cement

Application As a waterproof coating :

Ratio - Polymer : Water : Cement = 1 : 4: 7 and Coverage 50 Sq ft/ 1 kg, depending on the substrate

STORAGE & SHELF LIFE

Shelf life is 12 months in unopened container. Store in a cool , dry place away from sunlight

PACKING

STARBOND super latex 50 is available in 1, 5, 10, 20 kg. pail and 50 kg barrel.





STARproof® SUPER PRIME

PRODUCT DESCRIPTION

STARPROOF SUPER PRIME is a styrene acrylic modified primer, which has deep impregnated action on porous substrates. On application, it gives a semi opaque film over the substrate thereby binding all loose particles.

BENEFITS

SUPER PRIME having a deep impregnating action, gives bonding from within the surface hence the result for topcoats is very good. It also helps seal all the dust particles on the surface, which again results in better bonding between surface and topcoats.

USES

- Can be used as a primer coat under all waterproof coatings systems.
- Can be used as a sealer to seal porous substrates like concrete, sandstone etc.

METHOD OF APPLICATION

SURFACE PREPARATION

The surface must be clean and rough. All oil, dirt, debris, paint and unsound concrete must be removed. The final step of cleaning should be the complete removal of all residues with a vacuum cleaner or by pressure washing.

APPLICATION

Apply one coat of STARPROOF SUPER PRIME over the prepared surface using a brush. if the surface is very porous two coats could be applied with a gap of 2-3 hours between each coat. Dilution is not permissible.

COVERAGE

6-8 sq.mtrs per kg depending on the substrates

STORAGE & SHELF LIFE

Shelf life is 12 months in unopened container. Store away from sunlight and preferably below 30°C. Storage should be frost protected.

PACKING

STARPROOF SUPER PRIME is available in 1,5,10,20 kg pail, 50. kg.



STARBOND® STARCEM 2K ECO

PRODUCT DESCRIPTION

STARCEM 2K ECO is a two-component cementitious & acrylic polymer based flexible economical waterproofing coating. Made up from best quality Portland cement, properly selected & graded aggregates, additives & acrylic emulsion polymer as a binder. It is applied to waterproof concrete and similar structures. Specially designed for swimming pools, submerged tunnels, sumps, bridge decks, retaining walls, pile heads, water tanks and a wide variety of structures because post curing it forms an excellent elastomeric, tough, waterproof layer over the substrate.

BENEFITS

- Provides a flexible & low permeable coating.
- Excellent adhesion to concrete, natural and artificial stone.
- Good resistance to chloride ion diffusion and carbon dioxide.
- Resistance to freeze-thaw cycles
- Excellent resistance to ingress of water.
- Provides slip resistant coating.
- Waterproof for concrete structures, water tanks, basements.
- Minimum surface preparation needed and low labor costs
- Breathable-allows transmission of water vapor from interior of building
- resistance to the effects of long-term weathering, durable in all climatic conditions including UV attack.

USES

- Bathrooms and Toilets
- Water tanks, Storage tanks and Swimming pools
- Basements
- Channels
- Faces of dam walls
- Basins
- Balconies and terraces
- Cooling towers
- Underpasses
- Water retaining walls

COVERAGE

1.6-1.75 kg/ sq. m of mixed material in 2 coats depending on surface conditions.

SHELF LIFE & STORAGE

Shelf life is 12 months in a sealed container. Store in a cool, dry place away from sunlight at temperatures below 300C

PACKING

STARBOND STARCEM 2K ECO is available in 20 kg kit



STARBOND® STARCEM 2K

PRODUCT DESCRIPTION

STARCEM 2K is a two-component cementitious & acrylic polymer based flexible waterproofing & protective coating. Made up from best quality Portland cement, properly selected & graded aggregates, additives & acrylic emulsion polymer as a binder. It is applied to waterproof and protect concrete and similar structures. Specially designed for swimming pools, submerged tunnels, sumps, bridge decks, marbles, granites retaining walls, pile Heads, water tanks and a wide variety of extreme service class structures because on curing it forms an excellent elastomeric, tough, waterproof & protective layer over the substrate.

BENEFITS

- Flexibility - Provides a flexible & low permeable coating.
- Adhesion - Excellent adhesion to concrete, natural and artificial stone.
- Diffusion - Excellent resistance to chloride ion diffusion and carbon dioxide.
- Low temperature resistant - Resistance to freeze-thaw cycles and de-icing salts.
- Water permeability - Excellent resistance to ingress of water.
- Slip resistant - Provides slip resistant coating.
- Waterproof - Waterproof for concrete structures.
- It's Food Grade material – Specially designed for water tanks.
- Good abrasion resistance
- Covers honeycombed and pitted poured concrete effectively
- Minimum surface preparation needed and low labour costs
- High resistance to the effects of long-term weathering, durable in all climatic conditions including UV attack

USES

- Bathrooms and Toilets
- Water tanks
- Basements
- Channels
- Faces of dam walls
- Swimming pools
- Basins
- Storage tanks
- Balconies and terraces
- Cooling towers
- Underpasses
- Water retaining walls

COVERAGE

1.6-1.80 kg/ sq. m of mixed material in 2coats depending on surface conditions

SHELF LIFE & STORAGE

Shelf life is 12 months in a sealed container. Store in a cool, dry place away from sunlight at temperatures below 30°C

PACKING

STARBOND STARCEM 2K is available in 3, 15, 30 kg kit





STARBOND® STARLAC

PRODUCT DESCRIPTION

STARBOND STARLAC is a modified Acrylic Copolymer emulsion used as a clear coat lacquer and water replant. STARBOND STARLAC has improved physical strength, and superior adhesion to old concrete, masonry, brick, and many other surfaces. The dispersion contains an anionic emulsifier system and is free from film forming aids, solvents and plasticizers.

BENIFITS

- Easy to use.
- Improves bond Strength.
- Increases durability under freeze/thaw cycling.
- Fast drying transparent acrylic conformal coating
- Increases mortar wear resistance under rubber wheeled traffic.
- Cost effective material with fast touch dry time. Due to low permeability, it can be used for waterproof sealing and lining of tanks etc.

USES

- Toppings, patches and leveling course.
- Offers good protection in humid environments and resistant to mold growth.
- Excellent water replant.
- Provides excellent adhesion to a wide variety of substrates.
- Repairs to pre-cast structural members.
- Making aerated concrete water repellent.
- Resistance to mild chemicals, grease, alkaline and acid.

COVERAGE

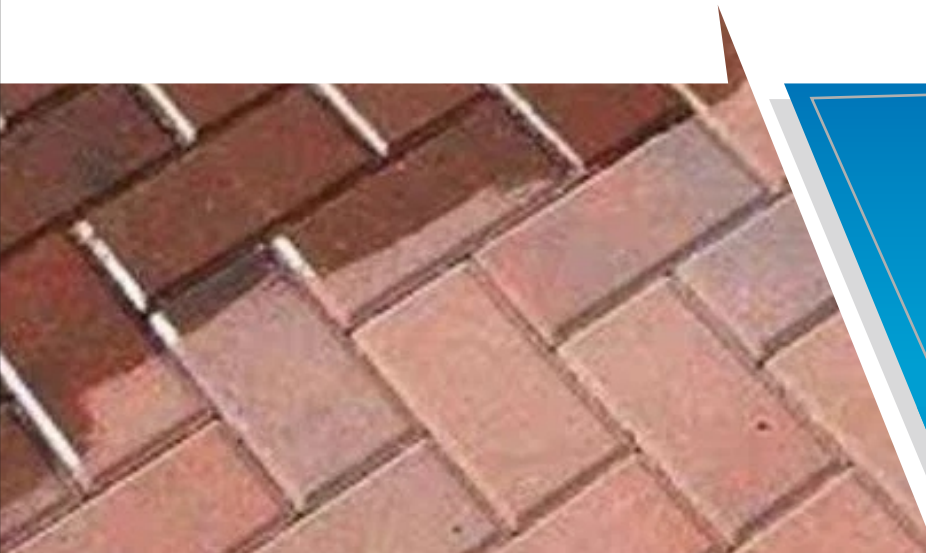
4-5 sq. mtrs per kg of mixed material in 2coats depending on surface conditions

SHELF LIFE & STORAGE

Stored in well-sealed containers STARBOND STARLAC will keep satisfactorily for 12 months from date of manufacture. Store away from direct sunlight in cool dry places.

AVAILABLE PACKING-

Available in,10kg,20kg,50kg,200kg





STARBOND[®] AM LG 20

PRODUCT DESCRIPTION

STARBOND AM LG 20 is an Integral Liquid Waterproofing Admixture for concrete and cement mortar. It has good plasticizing properties, makes concrete cohesive and prevents segregation. The liquid is to be added to the wet concrete or mortar. The product conforms to ISO: 2645 -1975 as an 'Integral waterproofing admixture. It fills up the capillaries in the concrete giving effective water proofing. It can also be used to accelerate the setting time of freshly mixed concrete.

BENEFITS

- **STARBOND AM LG 20** is suitable for use with all types of sand and cement normally employed in mortar manufacture.
- It gives constant plasticity and air entrainment over a wide range of mixing times and mixing efficiencies.
- Its slight foaming action breaks the capillary net in mortars and concrete increasing their frost resistance.

USES

- Ideal for water proofing concrete mortar constructions such as: tanks / reservoirs, foundations, swimming pools, sewers, external & internal plasters, basements, bathroom walls etc.
- In all uses where watertight plastering is required.

STORAGE & SHELF LIFE

Shelf life is 12 months in unopened container. Store away from sunlight and undercover.

DOSAGE

Mix 0.4% of **STARBOND AM LG 20** by weight with cement or 200 ml of **STARBOND AM LG 20** per 50 kg bag of cement.

PACKING

STARBOND AM LG 20 is available in 1, 5, 10, 20 kg. pail and 50 kg barrel





STARBOND® STARPLEX

PRODUCT DESCRIPTION

STARBOND STARPLEX is water reducing liquid with Air Entering admixture for concrete and cement mortar. The product enhances the workability and reduces water consumption considerably. It has good plasticizing properties, makes concrete cohesive and prevents segregation. Air entering Admixture. Apart from reducing the water cement ratio, STARPLEX will improve performance characteristics of hardened concrete: higher compressive strength and modulus; lower permeability, shrinkage and creep.

BENEFITS

- Suitable for use with all types of sand and cement normally employed in mortar manufacture.
- Improves workability & compaction
- Reduces water content thereby enables preparation of high-grade concrete with the same composition.
- Provides surface finish free from sand runs or blemishes
- Makes the concrete more durable and permeable and given the strength.

USES

STARPLEX is formulated for use by commercial ready- mix operators, who can benefit from its multiple role characteristics by minimizing admixture stock. Used for high strength concrete.

STORAGE & SHELF LIFE

Shelf life is 12 months in unopened container. Store away from sunlight and undercover.

DOSAGE

Mix 0.2% of **STARBOND STARPLEX** by weight with cement or 100 ml of **STARBOND STARPLEX** per 50 kg bag of cement.

PACKING

STARBOND STARPLEX is available in 1, 5, 10, 20 kg. pail and 50 kg barrel.





STARBOND® PLASTO A

PRODUCT DESCRIPTION

STARBOND PLASTO A is a blend of special additives used as a concrete quick setting and water reducing admixture

USES

The use of STARBOND PLASTO A accelerates the setting and hardening of concrete mix, thereby achieving higher early strength with all the resultant advantages of speeding up the job. It is used in underground basement, tunnels, emergency repair and stop huge ingress of water through structures, such as swimming pool, water treatment plant, reservoir etc. It is also used for execution of underground waterproofing work which restricts the water ingress for final waterproofing treatment.

ADVANTAGES

Easy to use versatile concrete additives. Very useful product for pre-cast industries. Very useful emergency repair in factory. Highly useful for stoppage of water ingress through underground structures. Most useful in cold weather concreting, particularly when temperature reaches below zero degree. Very useful for early stripping of shutters. Useful for sealing joints in masonry, cracks/joints in tunnels etc. For underground waterproofing work STARBOND PLASTO A plays a very vital role.

DOSAGE

300-500 ml of STARBOND PASTO A per 50 kg bag of cement.

SHELF LIFE & STORAGE

Shelf life is 12 months in unopened container.
Store in a cool, dry place away from sunlight.

PACKING

STARBOND PLASTO A available in 20 kg drum & 50,200 kg. Barrel.



STARBOND[®] ACC 3

PRODUCT DESCRIPTION

STARBOND ACC 3 is high versatile free flowing colorless concrete additives in liquid form. It is used as quick setting cum accelerating admixture for concrete and plaster.

BENEFITS

- Easy to use versatile concrete additives.
- Very useful product for pre-cast industries.
- Very useful emergency repair in factory.
- Highly useful for stoppage of water ingress through underground structures.
- Most useful in cold weather concreting, particularly when temperature reaches below zero degree.
- Very useful for early stripping of shutters.
- Useful for sealing joints in masonry, cracks/joints in tunnels etc.
- For underground waterproofing work STARBOND ACC 3 plays a very vital role.

USES

STARBOND ACC 3 is used in underground basement, tunnels, emergency repair and stop huge ingress of water through structures, such as swimming pool, water treatment plant, reservoir etc. STARBOND ACC 3 is also used for execution of underground waterproofing work which restricts the water ingress for final waterproofing treatment.

SHELF LIFE & STORAGE

Shelf life is 12 months in unopened container.
Store in a cool, dry place away from sunlight.

PACKING

STARBOND ACC 3 available in 5, 20 kg drum & 50 & 200 kg. Barrel





STARGROUT[®] PAG

PRODUCT DESCRIPTION

STARGROUT PAG is polyester resin based grout material carefully blended with a curing compound and fillers and supplied as a pre measured, two-part, resin grout. It is a specially formulated fast setting, high strength, and corrosion resistant grout suitable for anchoring of bolts & bars into concrete, masonry, rock and metal surfaces. After hardening, the grout has high mechanical properties. It is used where the difference between the hole diameter and bar diameter is $\leq 25\text{mm}$.

BENEFITS

- Rapid setting and strength achievement
- No expansion, no shrinkage
- Resistant to corrosion
- Resistant to vibration
- Shorter depth and smaller holes- Reduced drilling costs

USES

- **STARGROUT PAG** can be used where high speed of installation and early application of load is required.
- It can be used for rock bed anchors and fixing of marine equipment since it can be used for underwater operations.
- It can be used for permanent installation of reinforcement starter bars, foundation bolts, base plates, balustrading, barriers and safety fences, railway tracks, tie-back anchors, reinforcement doweling abutments, ground anchors for towers, cranes, dock sills etc.

METHOD OF APPLICATION:

MIXING:

1. Mixing of component, A&B should be carried out mechanically until uniform consistency is achieved.
2. Grout has to be placed within the gel time which is dependent on the temperature.
3. Do not add any other substances other than component A & component B.
4. Packs have been designed to produce practical and economic volumes of grout. Do not attempt to mix partial pack components.

APPLICATION:

Using the calculated volume of grout based on the below table, the grout should be poured steadily into the prepared holes. The anchor bar is then pressed into the hole to the required depth. Slight agitation of the bar will assist in achieving a complete bond. The bar should then be left undisturbed in the required position until the resin is set.

STORAGE & SHELF LIFE

The pails and drums must be stored in a covered area, away from direct sunlight, UV and other sources of heat. The shelf life of the product is up to 6 months if stored as per recommendations. Excessive exposure to sunlight and UV will result in the deterioration of the quality of the product and reduce its shelf life.

PACKING

STARGROUT PAG is available in 1 Kg



STARGROUT® INJEX

PRODUCT DESCRIPTION

STARGROUT INJEX is a specially formulated powder additive designed for shrinkage compensation and substantial reduction in water/cement ratio without affecting the fluidity. During the setting period of the grout, it yields controlled expansion to compensate the plastic shrinkage of grout/cement and it improves in cohesion and stability.

BENEFITS

- Based on gaseous expansion system which compensates plastic shrinkage.
- Reduced water/cement ratio – plasticizing in nature, low permeability.
- Improved durability and flow.
- High early strength development – chloride free.
- No metallic content.
- Improved Adhesion.
- STARGROUT INJEX has very fine sized expansive agents which provides uniform expansion throughout the grout mixture.

USES

- Reduce or fill the cracks or voids in the structural members
- Repairing the cracks in walls columns and other structural members
- Settlement of foundation
- Repairing the damage in the structural or masonry members
- For the honeycombing
- Avoiding seepage of water in stone masonries
- Strengthening tunnel lining

Dosages:

OPC	Water	STARGROUT INJEX	Approx yield
50 kg	22 lit	250 g	36 Lit

STORAGE & SHELF LIFE

The product must be stored in a dry and cool covered area. The shelf life of the product is up to 12 months if stored as per recommendations.

PACKING

STARGROUT INJEX is available in 250 gms.





STARGROUT[®] JF 001

PRODUCT DESCRIPTION

STARGROUT JF-001 is a high-quality fine, polymer-modified, water-resistant, OPC cement, Silica sand and various minerals as well as pigments -based powder grout designed for grouting glazed wall tiles, mosaics, vitrified & fully vitrified tiles, floor tiles, industrial floor tiles, etc.

BENEFITS

- STARGROUT JF-001 is designed to fill tile joints on walls and floors up to a maximum width of 08-10 mm for both interior and exterior applications.

USES

- Suitable for use on wall and floors.
- suitable for wide grouting up to 08-10 mm.
- can be used indoors and outdoors.
- easy to spread and smooth.
- easily applied to vertical surfaces.

METHOD OF APPLICATION

SURFACE PREPARATION

- Allow tile adhesive a minimum of 24 hours to cure before grouting
- Minimum joint width for walls is 2 mm and for floors 3 mm
- Joint surfaces must be firm, clean, and free from loose materials and adhesive residue
- It is advisable to moisten the joints before applying the grout to assist the flow of the grout into the joints and to reduce shrinkage of the grout at the tile – grout interface for unsealed tiles (water absorption).
- Do not grout over expansion or movement joints
- It is recommended that quarry or porous non-glazed tiles are sealed prior to grouting to prevent any staining.

STORAGE & SHELF LIFE

Shelf life is 12 months in unopened container. Store at cool & dry place, away from sunlight.

PACKING

STARGROUT JF 001 is available in 1kg pouch.



STARGROUT[®] EG 003

PRODUCT DESCRIPTION

STARGROUT EG-003 is a three component Epoxy based, high performance, chemical resistant & Stain-free grout for glazed, ceramic tiles, vitrified tiles, mosaics, all type of stones and agglomerates coverings. It is suitable for grouting on interior floor and wall applications up to 2-12mm joint width, where the areas are prone to attack by aggressive substances and chemicals. STARGROUT EG-003 epoxy system offers aesthetic look with smooth finish available in a wide spectrum of attractive colours.

BENEFITS

- Creamy consistency, easy to use & Water clean-ability
- Joint width 2mm-12 mm
- Provides non sagging joints on walls and floors
- Attains smooth and glossy finish joints
- No Shrinkage, therefore total absence of cracks and fissures
- Superior resistance to household stains and Chemicals
- Excellent Abrasion resistance
- Anti-bacterial, fungal resistance
- High compressive & flexural strength properties
- Available in many uniform colours (high colour stability)

USES

- As it offers anti-bacterial and fungal resistance which makes it well suitable for hospitals, clinics, kitchens, food based industries.
- Suitable for all interior grouting ceramic, vitrified & porcelain tiles, large format tiles/stones, low thickness slabs, natural & artificial stones.
- It also can be used in swimming pools and covered exterior areas.
- It is used wherever excellent mechanical properties, high chemical resistance combined with a high standard of finish is required such as in swimming pools, slaughter houses, factories and steam cleaned areas.

COVERAGE

The coverage depends on the tile or stone size, joint width and depth.

Formula for the coverage calculation:

$$\frac{(A + B)}{(A * B)} * C * D * 1.8 = \text{kg/m}^2$$

Where

- A = length of tile (mm)
- B = width of tile (mm)
- C = thickness of tile (mm)
- D = width of joint (mm)

STORAGE & SHELF LIFE

The pails and drums must be stored in a covered area, away from direct sunlight, UV and other sources of heat. The shelf life of the product is up to 18 months if stored as per recommendations.

PACKING

STARGROUT EG 003 is available in 1 Kg & 5 Kg KIT



STARGROUT® GP 045

PRODUCT DESCRIPTION

STARGROUT GP 045 is a non-shrink, natural aggregate precision grout with excellent high early and ultimate strengths. It is specially formulated to provide extended working time even at high ambient temperatures when mixed and placed at any recommended consistency. GP 045 is normally placed at a flowable consistency to completely fill voids between 10mm and 100mm. It has been reduced use of natural sand & Water which help to protect environment.

BENEFITS

- Multiple fluidity with one material.
- Non-metallic, will not stain or rust.
- Easy to use, just add water.
- Excellent for pumping: Does not segregate
- Superior freeze/thaw resistance.
- Resistant to oil and water.
- Meets ASTM C-1107 (Grade C).

USES

- All types of machinery.
- Steel columns.
- Bearing plates.
- Precast concrete.
- Other anchoring conditions that require high in- service strength.
- The non-shrink characteristics of Non-Shrink Precision Grout make it stable and capable of handling high load transfers.

METHOD OF APPLICATION

MIXING

Add 7 to 8 liters of cold, clean water for 30kg STARGROUT GP 045 powder. Take water in the container and slowly add the powder in to the water while mixing by hand or slow speed mixing machine and mix until a uniform, lump-free, smooth, thick consistency is achieved.

APPLICATION

Within 15 minutes after mixing, place grout into forms in normal manner to avoid air entrapment. Vibrate, pump, or ram grout as necessary to achieve flow or compaction. GP 045 must be confined in either the horizontal or vertical direction leaving minimum exposed surface. GP 045 is an excellent grout for pumping, even at high flow. For pump recommendations, contact Technical Service. Wet cure for a minimum of 3 days or apply a curing compound which complies with ASTM C-309 on exposed surfaces.

STORAGE & SHELF LIFE

Shelf life is 12 months in unopened container. Store away from sunlight and preferably below 30oC. Storage should be frost protected.

PACKING

STARGROUT GP 045 is available in 30 kg.



STARFIX[®] ACF 609

PRODUCT DESCRIPTION

ACF 609 is a single component, composed of high-quality weather durable acrylic based crack filler. Ready to use flexible putty for filling the cracks in plastered surfaces because it has highly bonding, ease of application, water resistance, aesthetic appearance & durability.

BENEFITS

- Non-Sagging paste form.
- Easy to apply by putty knife like conventional putties.
- Flexible, therefore does not crack & accommodates minor movements in cracks.
- low VOC Complaint and eco-friendly.
- Can be applied on damp surfaces but not on cracks with running water.
- Over coat able by any type of polymer-based paints, after 24 hours.
- Non-staining.
- Excellent adhesion with cementitious surface.
- Excellent resistance to UV & atmospheric conditions.
- It can be tinted using water-based strainers.
- Cured film is flexible therefore does not crack.

USES

- Internal & external plastered brick masonry wall cracks of up to 5mm.
- Filling and sealing of cracks and holes in roofs, terraces, water tanks etc. for stopping leakage & seepage completely.
- Gaps between masonry/concrete structures and aluminium windows, doors, wooden door frames and windows.
- Joints in cast iron, cement pipes.
- Filling the gaps/holes in AC sheets for 'J' bolt.
- Permanent & firm filling of the cavities behind wash basins, sinks, bath tubs.
- Sealing and plugging of structural joints.
- Repairing damaged and decaying structures.
- Plugging the gaps and cavities in between precast structures.
- Leak-proof filling of precast pipe joints

STORAGE & SHELF LIFE

Shelf life is 12 months in unopened container. Store at cool & dry place, away from sunlight.

PACKING

STARFIX ACF 609 is available in 500 gm, 1 kg.





STARFIX® PU 600

PRODUCT DESCRIPTION

STARFIX PU-600 is a one-component, gun-grade, non-sag, moisture-cure polyurethane sealant designed to skin and cure rapidly. This high-performance product is designed with outstanding UV resistance and long-term durability.

BENEFITS

- Paintable
- Single component & Convenient Packing
- Movement accommodation factor $\pm 30\%$ excellent adhesion without Printing
- Highly resistant to seawater, diluted acids, and alkalis. Odorless
- UV Resistant/ Fast Curing
- Low VOC
- Stable@temp-40oc to 200oc
- Accommodates 30% joint movement permanently flexible, excellent weather ability Easy to gun – Easy to tool
- Cures to a tough, durable, elastic consistency with excellent cut and tear resistance
- Paintable – non-sticky after cure

USES

- Sealant is designed to seal construction joints. To Seal Waterproof rivet seams and roof rails.
- To Seal Perimeter joints around windows and doors.
- Sealing corner moldings, fabricated roof-lap seams, bumper assemblies, and body-to-cab joints In motor homes. Sealing door hinges, skylights, and portholes.
- Sealing Air conditioning equipment, flashing and gutters

APPLICATION

STARFIX PU-600 is easy to apply with conventional caulking equipment. Ensure that the backer rod is friction fitted properly. Mask the sides of the joint with tape prior to filling for a cleaner finish. Fill the joint completely with a proper width-to-depth ratio and tool to ensure intimate contact of sealant with joint walls. Dry tooling is always preferred, although xylene can be used in limited amounts to slick the spatula if needed following the initial dry tooling.

YIELD

The following formula is an approximate guideline to calculate foreseen yield for a standard 600 ml sausage of STARFIX PU-600.

- $L / \text{kg} = 833 / (W \times D)$
Where: L = Length of sealant in meters obtained per cartridge.
D=Depth of the joining W=Width of the joint in mm

STORAGE & SHELF LIFE

Shelf life is 12 months in a sealed Sausage. Store away from sunlight and preferably below 300C. Storage should be frost protected

PACKING

STARFIX PU-600 is available 600 ml sausage,20 Sausage per carton.



STARFIX[®] PS GG 100

PRODUCT DESCRIPTION

STARFIX GG 100 is a high performance, non-sag, chemical resistant elastomeric joint system. Due to its high polysulfide polymer content, it is resistant to many chemicals, shrinkage, aging, thermal stress and the effects of outdoor exposure

BENEFITS

- Expansion Joints in Buildings, Concrete panels, Potable water retaining structure
- Accommodates continuous and pronounced cyclic movement ($\pm 25\%$)
- Adheres to most common substrates
- High resistance to ageing reduces physical damage due to climatic extremes
- Easy mixing and application
- Non-slumping - can be used in wide joints up to 40 mm wide.
- Safer nontoxic hardener.
- Cures at ambient temperatures to a tough, elastic and flexible rubber like material.
- Bonds strongly to most of the building materials with the use of recommended primers.
- Durable, remains unaffected by UV rays, ozone and weathering conditions
- It can be over coated by waterproofing compounds.

USES

STARFIX GG 100 is suitable for use within the construction industry on all parts where above average repeated movement is encountered over a wide temperature range.

- Sealing of dynamic structural cracks
- Glazing joints of window, door frame and curtain walls.
- Joints & 'J' bolts of asbestos sheet roofing.
- Sealing of water retaining structure joints such as, water tank, reservoir, dams, aqua
- ducts, canals, culverts and water treatment plant.
- Sealing of joints in traffic areas such as, bridges, roads and car parking areas.
- Sealing of expansion, contraction & construction joints in building structures such as, basements, subways, retaining walls, floors, external walls and claddings of high-rise buildings, roof terraces & ceilings especially structural expansion joints running through the ceiling

COVERAGE

Sealant :To estimate the no. of running meter work done in 1 kg of PS GG 100 required to seal the join can be very easily estimated by using the following formula:-

$$i) \text{PS GG 100-L/kg} = 650 (W \times D)$$

$$ii) \text{PS GG 100-L/kg} = 625 (W \times D)$$

Where, L = Length of the joint in linear running meter

W= Width of the joint in mm.

D = Depth of the joint in mm.

STORAGE & SHELF LIFE

Shelf life is 12 months in a sealed Sausage. Store away from sunlight and preferably below 30°C. Storage should be frost protected.

AVAILABLE PACKING

Available in 1kg,4kg containers



STARFIX® PS PG 100

PRODUCT DESCRIPTION

STARFIX PG 100 is a high performance, self-leveling, chemical resistant elastomeric joint system. Due to its high polysulfide polymer content, it is resistant to many chemicals, shrinkage, aging, thermal stress and the effects of outdoor exposure. It is highly resilient and has excellent recovery characteristic after extended period of compression or elongation.

BENIFITS

- Forms a tough, elastic, rubber-like seal
- Accommodates continuous and pronounced cyclic movement ($\pm 25\%$)
- Adheres to most common substrates
- High resistance to ageing reduces physical damage due to climatic extremes
- Easy mixing and application
- Non-slumping - can be used in wide joints up to 40 mm wide.
- Safer nontoxic hardener

USES

STARFIX PG 100 is suitable for use within the construction industry on all parts where above average repeated movement is encountered over a wide temperature range.

METHOD OF APPLICATION

- Joint surface to be applied should be clean dry and free from loose material, dust oil or grease.
- Apply appropriate quantity of primer.
- Empty out the curing agent sachet in to the base in the can.
- Mix and use immediately one complete unit at a time.
- Use a slow speed drill machine / mixer fitted with a spiral stirrer and mix for 10 minutes.
- The product is ready to be used when you get a uniform smooth paste without any streak of grey or white color.
- Install a backer rod in the joint to be applied with sealant. Pour or gun (with a conventional caulking gun) the mixed sealant in the prepared joint.
- Sealant will get leveled in the joint. Please refer detail Sealant Application Guideline.

COVERAGE

Sealant: To estimate the no. of running meter work done in 1 kg. Of sealant can be calculated by following formula –

$$1) L / \text{kg} = 625 / (W \times D)$$

Where, L = Length of the joint in linear running meter

W = Width of the joint in mm.

D = Depth of the joint in mm.

STORAGE & SHELF LIFE

Shelf life is 12 months in a sealed Sausage. Store away from sunlight and preferably below 30°C.

Storage should be frost protected.

AVAILABLE PACKING

Available in 1kg,4kg containers



STARFIX[®] PS RG 100

PRODUCT DESCRIPTION

STARFIX RG 100 is a two-part elastomeric sealant based on a liquid polysulphide polymer which when mixed with accelerator (curing agent) cures by chemical reaction to form a tough, flexible rubber seal. This sealant has excellent Fuel resistance, adhesion to different substrates like masonry, concrete with excellent movement accommodation.

BENIFITS

- Easy to use, Cold applied.
- Pourable & self-leveling
- Excellent adhesion with many substrates.
- Very high thermal flexibility.
- Good UV, Flame and Fuel Resistance.
- Excellent Water proof

USES

STARFIX RG 100 is suitable for use within the construction industry on all parts where above average repeated movement is encountered over a wide temperature range.

METHOD OF APPLICATION

- Surface should be fully dry, clean and free from dust, laitance, oil and grease etc.
- Clean with sand paper & wire brush, then dust and foreign particles to be removed. Subsequently use masking tape at floor level beside both sides to get sharp edged neat and clean joint.
- Avoid adhesion of spill-over material beside the joint.
- Use polyurethane Foam (PUF) strips (equivalent) in expansion, construction & control joints as back up material to avoid 3-face adhesion and to avoid contact between joint forming board & sealant.
- Use of primer on vertical side faces of the joint is optional to ensure strong bonding between substrate and sealant. Primer must be recommended for old concrete.
- Sealant application should start after 30 minutes but not later than 2 hrs after priming the surface.
- The Base and Accelerator compounds are packed in pre-weighed quantity as per the mixing ratio.
- Mix the material of individual container.
- Transfer entire quantity of Accelerator to the base compound and mix it thoroughly to a uniform and homogenous Grey color.
- Mixing can be done manually with spatula/palette knife or special flat stirrer attached to a low speed electric mixer less than 500 rpm.

COVERAGE

Sealant: To estimate the no. of running meter work done in 1 kg. Of sealant can be calculated by following formula –

$$1) L/kg = 625 / (W \times D)$$

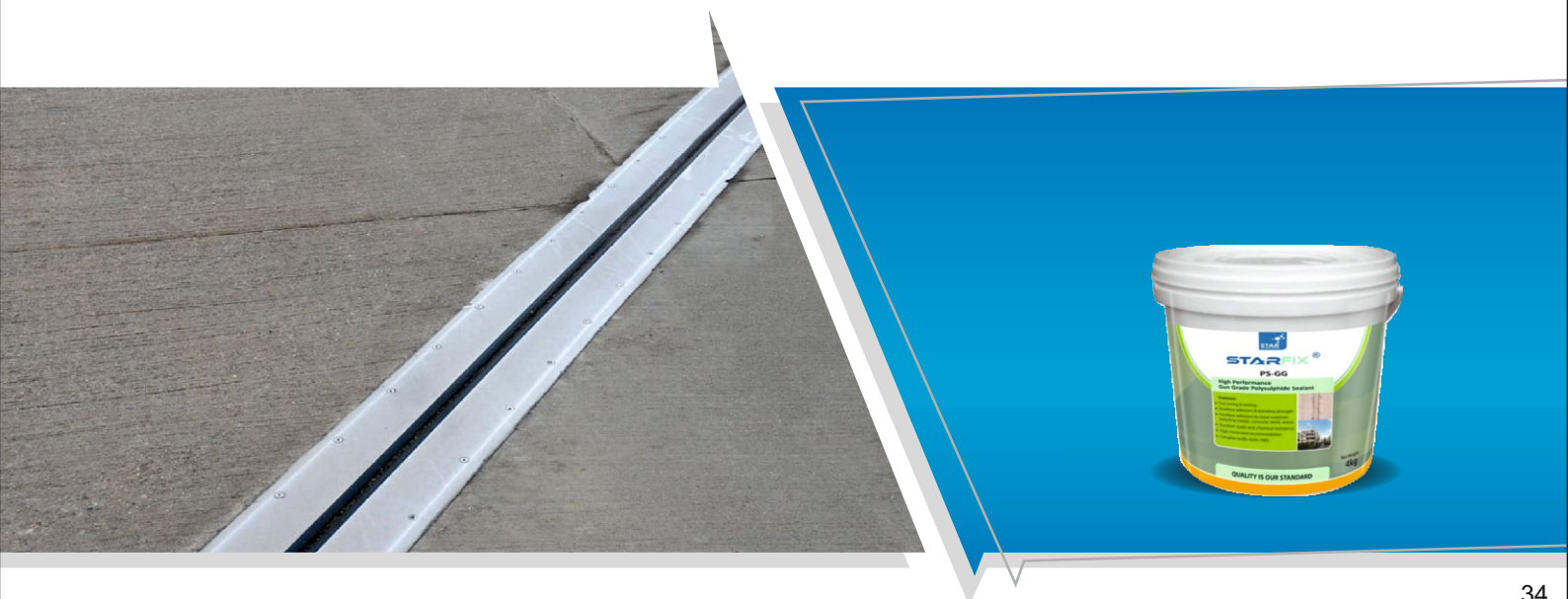
Where, L = Length of the joint in linear running meter
W = Width of the joint in mm.
D = Depth of the joint in mm.

STORAGE & SHELF LIFE

Shelf life is 12 months in a sealed Sausage. Store away from sunlight and preferably below 30°C. Storage should be frost protected.

AVAILABLE PACKING-

Available in 1kg,4kg containers



STARproof® SALTFIX

PRODUCT DESCRIPTION

SALTFIX is a specially polymer base salt bleeding inhibitor, which acts as an anti-efflorescence primer and prevents the growth of salt formation on the wall. SALTFIX penetrates deeply into the substrate and prevents the structure from the effects of salt efflorescence that occur on the surface generally due to capillary rising humidity and penetrating humidity. SALTFIX is used to strengthen, to protect mineral substrates, and to reduce their absorbency. The treatment with SALTFIX prevents salts from penetrating into not yet cured sealing slurries and renovating plasters.

BENEFITS

- Increases the chemical and mechanical resistance
- Having strengthening and hydrophobic properties
- Can be brushed or sprayed on.
- Works as a hardener of sealing slurries.
- Alkaline and hence non-toxic
- Excellent alkali & efflorescence resistances
- Physical barrier to water transport
- Chemical barrier to salt migration
- Excellent substrate penetration & top-coat adhesion
- Excellent Adhesion

USES

- Basements, effluent treatment and sewage treatment plants which need high chemical resistance
- Waterproofing bodies in coastal environments
- Chimneys and cooling towers (from inside)
- Repair of heritage structures

METHOD OF APPLICATION

Dilution

Starproof Saltfix	Potable Water
1.0 Ltr	0.8 – 1.0 Ltr

Application

Clean the surface with brush and ensure no loose particle remains on the substrate. On the clean and dry substrate apply the SALTFIX material with the help of a brush. Application is to be done on concrete, plastered or brick; masonry surfaces till saturation level is achieved. Allow it to dry for 3-4 Hrs. then apply second coat. Further coating must be applied until complete saturation is achieved.

STORAGE & SHELF LIFE

The pails and drums must be stored in a covered area, away from direct sunlight, UV and other sources of heat. The shelf life of the product is up to 12 months if stored as per recommendations. Excessive exposure to sunlight and UV will result in the deterioration of the quality of the product and reduce its shelf life.

PACKING

SALTFIX is available in 1 Kg, 5 Kg, 10 Kg, 20 Kg.





STARGROUT[®] PLUG

PRODUCT DESCRIPTION

STARGROUT PLUG is a dark brown non-shrinking grout formulated to immediately stop flowing water through concrete cracks and holes in seconds. Using an advanced formulation based on its unique waterproofing crystalline system the product hardens more than the concrete into which it has been placed to ensure your repairs stay where they are placed.

BENEFITS

As a seal stopping seepage around pipes and metal in concrete and masonry. As an anchor for bolts and other metals.

METHOD OF APPLICATION

SURFACE PREPARATION

All substrates should be structurally sound, stable, clean, and free of any substance or condition that may reduce or prevent proper adhesion.

MIXING

Add 1 part of cold, clean water for 4 Part of STARGROUT PLUG powder. Take water in the container and slowly add the powder in to the water while mixing by hand or slow speed mixing machine and mix until a uniform, lump-free, smooth, thick consistency is achieved.

APPLICATION

It is applied on concrete, brick and/or block to stop flowing water. It may be applied by hand using gloves to fill holes, cracks, and crevices. The plug should be manually worked and placed within the cavity pressing firmly until it is hard. For repairs of flowing water - mix only enough product to be applied within 1 minute. Do not over work the material, as it is extremely quick setting.

STORAGE & SHELF LIFE

Shelf life is 6 months from the date of manufacturing in unopened bags. Store in dry moisture free area.

PACKING

STARGROUT PLUG is available in 1kg ,5kg





STARFLOOR® EP MP

PRODUCT DESCRIPTION

STARFLOOR EPMP is a two component, high strength, multipurpose epoxy adhesive system. It can be used as an adhesive for a wide range of materials or as a versatile filler for gap bonding, coving, surface repairs and even to bond various substrates like metal, ceramic, wood, chrome, concrete, marble, glass, fiberglass, tiles etc. When both components are mixed in recommended ratios and cured appropriately at room temperature and provides excellent bond strength for all type of applications.

BENEFITS

- Bonds multiple substrates
- Extremely high bond Strength
- Rapid setting and fast productivity can be achieved
- Excellent water and damp-proof property
- Solvent free system

USES

- STARFLOOR EPMP can be used as an adhesive between concrete and metal or marble or tile applications.
- It can be used as patching or repairing mortar on concrete and other masonry surfaces
- It can be used as primer or bond coat between old to new concrete as well
- Can be used for Sealing of cracks and as a Coving mortar in concrete structure.
- Can be used as waterproofing coating on concrete surfaces.

METHOD OF APPLICATION

Mixing

The mix ratios for the different applications were mentioned below

- For primer 1:2 (Hardner: Resin)
- For putty 1:2:3.5 (Hardner: Resin: Filler)
- For coving mortar 1:2:8.5 (Hardner: Resin: Filler)
- For filler gradation details kindly contact SSPL technical team.

As an adhesive

The resin and hardener are mixed in the prescribed quantities on a plate with the help of a spatula. A thin film of the mix is applied on the Surface to be bonded. The surfaces should be held together until the joint sets (about 4 to 6 hours at room temperature).

As Bond Coat, Primer

Mix both Resin and Hardener components thoroughly and apply a thin layer on concrete or any masonry surface with suitable brush or roller. Allow the coating to dry for 2-3 hours prior to go for subsequent application.

As Coving mortar or Crack filler

Mix resin and hardener for one minute thoroughly in a clean bowl with hand trowel or slow speed drill. Add filler component slowly into it until uniform consistency is achieved. Filler component dosage can be adjusted to get desired consistency for intended application. Immediately after mixing, place on the mixed material on cove area and spread out to give a uniform coverage. Form the curved section of the cove with a coving trowel. Use a steel blade trowel to finish.

STORAGE & SHELF LIFE

Shelf life is 12 months in sealed container. Store away from sunlight and preferably below 30°C. Storage should be frost protected.

PACKING

STARFLOOR EPMP is available in 1.5 Kg kit.



STARFIX[®] STARPRIME 300

PRODUCT DESCRIPTION

STARPRIME 300 is a 100% reactive system and solvent free, two-component epoxy system consisting of an epoxy resin and amine type hardener. It is designed as a moisture insensitive adhesive and binder for numerous applications needs and available in low viscosity and high modulus.

BENEFITS

- High compressive and tensile strength
- Highly resistant to aggressive chemicals
- Corrosion and abrasion resistant
- Can withstand operating temperature from -30oC to 100oC (dry heat)
- Universal adhesive for bonding together concrete, wood, ceramic and steel materials
- Bond fresh concrete topping to hardened concrete slab waterproof.
- Supplied pre-weighed quantities.
- May be extended with sand or aggregate for thick applications and mortar repairs.

USES

- Sealing porous concrete.
- Coating and Priming.
- Binder in epoxy mortars.
- General Adhesive.
- Crack Injection.
- Anchoring.
- Joint repair material.

Coverage

45-50 sq. ft/kg

STORAGE & SHELF LIFE

Shelf life is 12 months in sealed container. Store away from sunlight and preferably below 30°C. Storage should be frost protected.

PACKING

STARFIX STARPRIME 300 is available in 6 kg kit





STARFIX[®] EPC HD

PRODUCT DESCRIPTION

STARFIX EPC-HD is a two component, solvent-free, epoxy resin self-smoothing chemical resistant flooring system and coating for metal and concrete surfaces. It has excellent adhesion qualities, chemical resistant and glossy finish and easily cleaned.

BENEFITS

- Excellent wear under heavy traffic
- High flow characteristics combined with an attractive self-smoothing finish.
- Fast application - minimizes downtime.
- Chemically resistant - good resistance to a wide range of chemicals.
- Durable and good impact resistance.
- Hygienic - provides a dense, impervious, seamless floor surface which is easily cleaned.
- It can be applicable through Brush, Roller and spray
- Solvent free, low odor and safe application.
- It is Food Grade material – Specially designed for water tanks.

USES

STARFIX EPC-HD is designed for use in wide range of industrial environments where a lasting solution to floor maintenance problems is required. It provides a dense, impervious, colored and chemically resistant floor surface which is hygienic and easy to clean. Typical applications include:

- Heavy duty concrete floor coating in industrial and commercial plants such as warehouses, service stations, chemical plants, metal treatment plants, internal car parking decks.
- Machinery service areas.
- Rust preventing coating for steel and concrete tanks.
- Coating on steel exposed to abrasion

Coverage

20 sq. ft/kg with 400 microns DFT (2 coats)

STORAGE & SHELF LIFE

Shelf life is 12 months in sealed container. Store away from sunlight and preferably below 30°C. Storage should be frost protected.

PACKING

STARFIX EPC HD available in 6 kg kit.



STARFLOOR® SF 034

PRODUCT DESCRIPTION

STARFLOOR SF 034 is a non-metallic floor hardener, which contains specially graded nonmetallic hard wearing natural aggregates. It is applied as a dry shake over freshly floated concrete to provide a durable, non-slip monolithic floor. It has been reduced use of natural sand & Water which help to protect environment.

BENEFITS

- Provides a monolithic hardening surface within the concrete matrix.
- Produces high abrasion resistant floor surface
- Provides a wear resistant surface.
- Provides high impact resistance twice that of plain concrete.
- Three times greater surface density than plain concrete which increases resistance to penetration by oil, grease, hydraulic fluids, ethylene, glycol and many industrial chemicals.
- May be used for open and continuously wet areas.
- Non-rusting and easy maintenance.
- Fast construction with minimum site costs for materials handling and nonbonding problems.
- Easy to use and economical.
- Non-slip characteristics.
- Resists oil and grease penetration and reduces dusting.

USES

- Heavy industry.
- Power stations.
- Agricultural buildings & yards.
- Desalination plants.
- Distillation plants.
- Laboratories.
- Abattoirs.
- Parking lots
- Warehouse floors, loading bays and workshops.
- Steel industries.
- Railway platforms.

APPLICATION

The first application is made by using 1/2 to 2/3 of the material required for eventual use. This is evenly broadcast on to the concrete surface. When the material becomes uniformly dark by the absorption of moisture from the concrete this application can be floated. Wooden floats or on large areas, the power trowel with disc may be used. However, that the surface is not overworked. Immediately after floating the remaining materials is thrown evenly over the surface. Again, moisture is absorbed, and the surface can be floated in the same way as before. Final finishing of the floor using the power trowel with blades can be carried out when the floor has stiffened so that damage will not be caused. Proper curing practices should be adopted after application.

STORAGE & SHELF LIFE

Shelf life is 12 months. Store in dry Moisture free area.

PACKING

STARFLOOR SF 034 is available in 25 kg.





STARproof® CTE

PRODUCT DESCRIPTION

STARPROOF CTE is a high build, epoxy coal tar coating. It is a tar extended, two pack epoxy system with high solid content. It contains inert, reinforcing fillers and a special blend of additives. It is supplied as pre-measured quantities ready for site mixing and use. The high build nature of the product allows good corrosion resistance to be achieved in a single coat application along with excellent chemical & abrasion resistance.

BENEFITS

- Provides long term protection to steel and concrete.
- Good adhesion to most substrates.
- Good chemical resistance.
- High build coat in single application, tough, durable, and resilient protective coating.
- Can be used in Cathode protection systems.
- High solids content. Good flexibility.
- Good coverage rate.
- Can be applied by brush, roller, or airless spray.

USES

Provides chemical and abrasion resistance to prevent Corrosion of concrete surfaces for applications such as:

- Sewage water tanks, channels, and intakes.
- Manhole linings.
- Sewage works and effluent plants.
- Dam gates
- Offshore drilling rigs
- Non-potable water tank and pipe coating
- Marine applications
- Heavy duty structural coating
- Chemical processing.
- Foundation waterproofing to resist against chlorides and sulphates.
- Jetties, piers, and docks.

Coverage

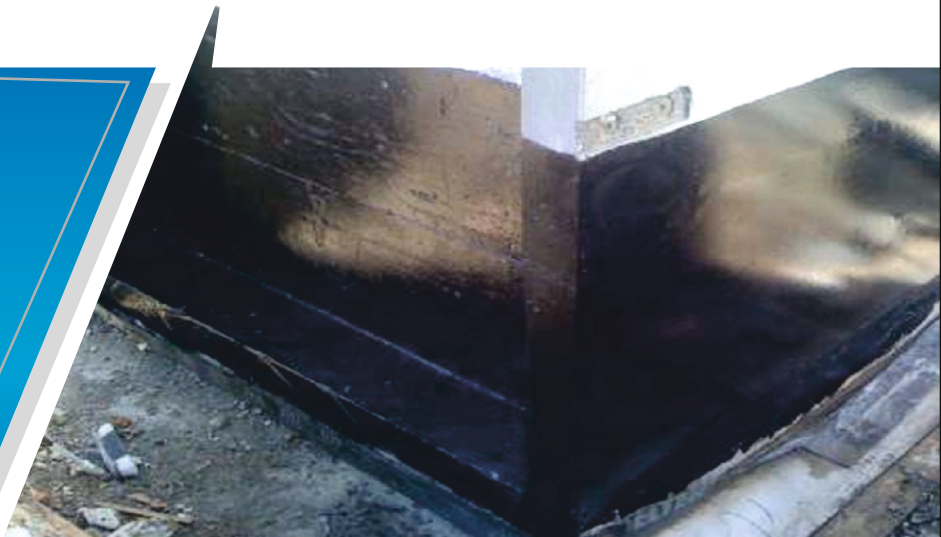
3.3 m²/kg @300 microns DFT in one coat

STORAGE & SHELF LIFE

Store under cover, out of direct sunlight and protect from extremes of temperature. Failure to comply with the recommended storage conditions may result in premature deterioration of the product or packaging. For specific storage advice consults SSPL Technical Services Department.

PACKING

STARPROOF CTE available in 20 kg kit.



STARFIX[®] 30-36

PRODUCT DESCRIPTION

STARFIX 30-36 is a tough and flexible adhesive and sealant, forming a durable seal against air leakage. Due to its excellent water, U.V. and abrasion- resistance it can be used on metal duct in outdoor as well as indoor thermal insulations.

BENEFITS

- Good adhesion and high strength.
- Water resistant can be washed with mild soap.
- Non-toxic & non- flammable.
- UV resistance.
- Chemical resistance.
- Antifungal & antibacterial.
- Resists high temperature.

USES

STARFIX 30-36 is used as an excellent sealant against air leakage.

APPLICATION METHOD

Apply a tack coat of STARFIX 30-36 @ 4 to 6 m² per kg. After applying tack coat immediately imbed the selected lagging fabric smoothly in to the wet coating. Apply two finish coats of STARFIX 30-36 at rate of 4 to 5 m² / liter. It is very important to ensure that each coat of STARFIX 30-36

totally cured before the next coat is applied. The dry film thickness will vary with fabric selected.

Brush- Use suitable paint brush and apply with full brush and spread out evenly.

Roller- Use medium size paint roller and dipped fully and spread out evenly.

Spray- STARFIX 30-36 can be applied with airless spray. For airless equipment information, please contact your equipment supplier followed by product viscosity mentioned in data.

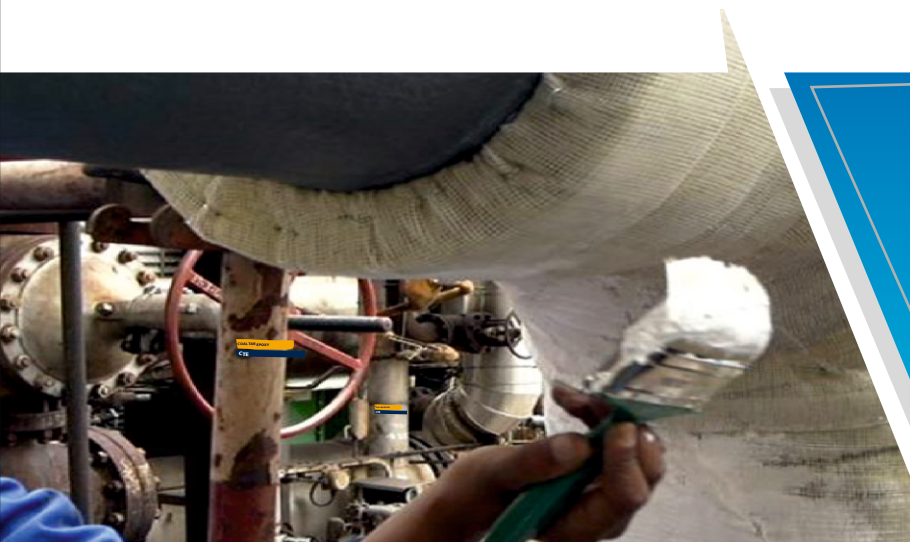
SHELF LIFE & STORAGE

Store under cover, protect from direct sunlight and high temperature (>350C). Shelf life is up to 12 months in unopened container when stored as directed.

Failure to comply with the recommended storage conditions may result in premature deterioration of the product or packaging.

PACKING

STARFIX 30-36 is available in 1, 5, 10, 25 kg airtight Plastic Pail.





STAR[®]KLEEN TILOKLEEN

PRODUCT DESCRIPTION

STAR[®]KLEEN TILOKLIN is a special liquid, inhibited, water based, pre-soaked alkaline cleaner for frictionless cleaning system. STAR[®]KLEEN TILOKLIN is specially designed to clean effectively Tile surfaces. STAR[®]KLEEN TILOKLIN is also used for many other industrial cleanings like spot remover, etc.

BENEFITS

- cleaning of concrete surfaces.
- ceramic tiles.
- vitrified tiles.
- Granites.
- Toilet bowls.
- Ceramic sinks and wash basin.

USES

- Multipurpose cleaning agent.
- Its quick action make loosens, and helps to remove oil, grease film and grime.
- Keeps surfaces intact.
- STAR[®]KLEEN TILOKLIN is also used for many other industrial cleanings like spot remover, and all-purpose pressure washing detergent etc.

METHOD OF APPLICATION

Being water base product STAR[®]KLEEN TILOKLIN is diluted with water in the proportion of 5-10% depending on deposition of contamination. The dilution factor can be increased up to 5% for difficult cleaning. The solution can be used the parts till it gives the satisfactory result.

STORAGE & SHELF LIFE

Shelf life is 12 months in unopened container. Store away from sunlight and preferably below 30°C. Storage should be frost protected.

PACKING

STAR[®]KLEEN TILOKLIN is available in 1,5 kg.



Note

Our Profile



4
FACTORIES



20
YEARS



150
CITIES



100
PRODUCT

1. UAE
2. SAUDI ARABIA
3. INDIA
4. ETHIOPIA

1. LEADER IN ADHESIVES
2. REPUTED NAME
3. STEADY DEVELOPMENT

11. COUNTRIES

MORE THAN 100 PRODUCTS

Current Markets



UAE



ETHIOPIA



LEBANON



OMAN



SAUDI ARABIA



KUWAIT



BAHRAIN



QATAR



INDIA



EGYPT



JORDAN



FACTORY LOCATIONS

DAMAN

STAR SPECIALTIES POLYMERS PVT. LTD.

Survey No 52/3, 54/6-D, Daman Indl. Estate Ltd., Village - Kadaiya, Nani Daman, Daman - 396 210 • Contact : 9712925770 • Email: Info@star-ind.com www.star-ind.com

HYDERABAD

ANSCHEM INDIA PVT. LTD.

S.No. 539/1, Sanghi Nagar, Koheda Village, Abdullapurmet Mandal, Ranga Reddy Dist., Hyderabad - 501511 (Telangana). Email: Info@star-ind.com www.star-ind.com

REGIONAL OFFICES

SECUNDERABAD - REGIONAL OFFICE

ANSCHEM INDIA PVT. LTD.

Plot No. 103-B, Sai Veda Sahakara Complex, B-44, Vasavi Colony, Road No. 6, Vikrampuri Colony, Secunderabad Telangana

STAR SPECIALTIES POLYMERS PVT. LTD.

Plot No. 103-B, Sai Veda Sahakara Complex, B-44, Vasavi Colony, Road No. 6, Vikrampuri Colony, Secunderabad Telangana

Our Authorized Distributor

COMPANY DEPOTS

STAR SPECIALTIES POLYMERS PVT. LTD. - GHAZIABAD DEPOT

Kh.no.90. Near Hp Petrol Pump. Garhi Guldhhar Mrt, Meerut Road, Ghaziabad, UP
Contact: 90819 95117 • Email: ghaziabaddepo@star-ind.com

STAR SPECIALTIES POLYMERS PVT LTD - COIMBATORE DEPOT

Plot No:421/a1, Patel Road,ramnagar, Coimbatore - 641009, Tamilnadu
Contact: 90819 95120 • Email: coimbatoredepo@star-ind.com

STAR SPECIALTIES POLYMERS PVT LTD - KOLKATA DEPOT

P-808, Block-a, Lake Town Road. North Twenty Four, Parganas, Kolkata-700089, West Bengal
Contact: 90819 95112 • Email: kolkatadepo@star-ind.com

STAR SPECIALTIES POLYMERS PVT. LTD. - SECUNDERABAD DEPOT

S.No. 539/1, Sanghi Nagar, Koheda Village, Abdullapurmet Mandal, Ranga Reddy Dist., Hyderabad - 501511 (Telangana).
Email: Info@star-ind.com • www.star-ind.com